

# RoseworksMT, Inc.

Handcrafted Copper & Silver Originals

Phone: (406) 837-3477 Email: [gallery@roseworksmt.com](mailto:gallery@roseworksmt.com) Web: [roseworksmt.com](http://roseworksmt.com)



Made in the U.S.A

Offering Original Artisan

Wearable Art • Pins • Earrings • Necklaces

Bracelets • Ornaments • Gallery

Each piece of copper is cut, hammered for texture and shape, then heated to various temperatures to achieve it's unique and individual colors.

All rights reserved 2019. RoseworksMT, Inc. P.O. Box 583 Bigfork, MT 59911 USA

# Earrings

Earwires are Surgical Steel Base with a Hypo-Allergenic Copper Colored Plating  
Colors and textures will vary with our unique heating process.  
Dimensions are Approximate.



E4 1/2" X 1 1/2"



E48 3/4" X 2"



E55 7/8" diam



E56 3/4" x 2 3/4" diam



E129 1 1/8" X 1 1/8"



E12 3/4" X 1 1/4"



E1 3/4" diam



E151 1/2" 2"



E149 1/4" x 2"



E115 1/2" x 2"



E143 1 1/2" x 1 1/2"



E138 1 1/2" diam



E20 3/4" x 1 1/2"



E25 1 3/8" diam



E53 7/8" diam



E146 3/4" 1 1/2"



E49L 2 3/8" diam



E61 3/4" x 1"



# Earrings



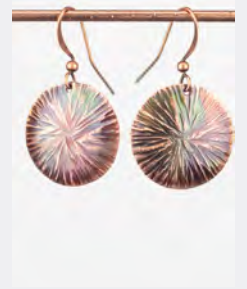
E14 3/4" 1"



E150 7/8" diam



E145 1 3/8" diam



E64 7/8" diam



E144 7/8" diam



E140 1 1/2" diam



E62 1 1/2 x 1 1/2"



E173 1/2" 1 1/2"



E172 1" x 1 1/2"



E141 7/8" diam



E148 1 1/4" diam



E142 1" diam



E10S 3/4" X 3/4"



E136 1 1/2" X 1 1/2"



E171 1" diam

## Polished Styles



EP1  
1/2" X 1 1/4"

EP2  
3/4" X 1 1/2"

EP51  
1" X 1 1/2"

EP48

# Necklaces



NMST1  
1" X 1 1/2"  
18" Chain

NMST2  
1" X 1 1/2"  
18" Chain

NMST3  
1" X 1 1/2"  
18" Chain

NMST4  
1" X 1 1/2"  
18" Chain

NMST5  
1" X 1 1/2"  
18" Chain

NMST6  
1" X 1 1/2"  
18" Chain



N123T  
1 1/2" diam  
20" Chain

N123MT  
1 1/2" diam  
20" Chain

N123H  
1 1/2" diam  
20" Chain

N125-1  
1" diam  
20" Chain

N125-2  
1" diam  
20" Chain

N48-SM  
1/2" X 1 1/4"  
18" Chain

N48-SMS  
1/2" X 1 1/4"  
18" Chain



NBEAR  
2" X 1 1/2"  
18" Cord

NMOOSE  
2" X 2"  
18" Cord

N35P  
1/4" X 1 1/2"  
20" Chain

N35-D  
1/4" X 3"  
Adj 20" Chain

NMST-D  
1 1/2" X 3"  
Adj 20" Chain

ND10  
3/4" X 3"  
Adj 20" Chain



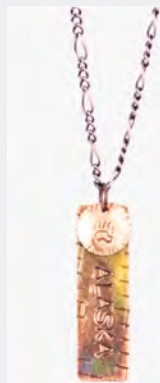
# Necklaces



N10S1  
3/4" X 3/4"  
18" Chain



N10S2  
3/4" X 3/4"  
18" Chain



N35AK  
1/4" X 1 1/2"  
20" Chain



NAK  
1/2" X 1"  
20" Chain



N10  
1 1/2" X 2"  
Adj 20" Chain

# Necklace Sets



E1 1" diam  
N1 1 1/2" diam  
20" Chain



E115 1/4" X 2"  
N115 1" X 3 1/4"  
20" Chain



E61 3/4" 1"  
N61 1 3/4" X 2 1/4"  
20" Chain



E64 7/8" diam  
N64 2" diam  
20" Chain



E62 1 1/2" X 1 1/2"  
N62 2 1/2" X 2 1/2"  
20" Chain



E48 3/4" X 2 1/4"  
N48 1" X 3 3/4"  
20" Chain



E10S 3/4 X 3/4"  
N128 2" X 2"  
24" Chain

# Dangle Styles



ED1 7/8" x 3"  
 ND1 1 7/8" x 5"  
 Adj. 24" Chain



ED2 3/4" x 3"  
 ND2 1 1/4" x 5"  
 Adj. 24" Chain



ED3 1" x 3"  
 ND3 1 1/8" x 5"  
 Adj. 24" Chain



ED4 1/2" x 3"

ED5 1/4" x 3"

ED6 1/4" x 3"

ED7 3/4" x 3"



# Enamel on Copper



EE7 1 3/8" diam

EE6 7/8" X 1 1/4"

EE9 1 1/2" diam



EE8 1 1/8" x 1"

EE10 3/4" x 2"



EE12 3/8" X 1 1/2"

EE13 1/4" X 2"  
black/turq

## Clear Enamel on Polished Copper



EE14 3/4" X 1 3/4"

EE15 7/8" diam

EE16 3/4" X 2"

# Enamel on Copper

All styles available in blk/turq/rust/green/lavender.



NE15 3/4" X 2"  
grn/blk

NE16 3/4" X 2"



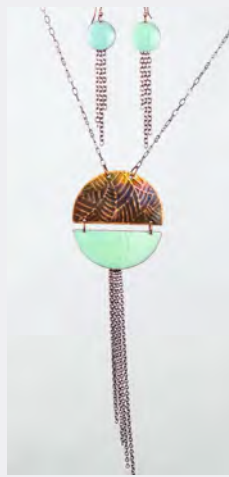
NE67 1 1/8" X 2"  
blue/blk



EE1 1/2" X 3"  
NE1 1 5/8" X 5"



NE2 7/8" X 5"



EE3 1/2" X 3"  
NE3 1 7/8" X 5"



EE4 1/2" X 3"  
NE4 7/8" X 5"



EE5 5/8" X 3"  
NE5 3/4" X 6"



EE11 7/8" diam  
NE11 1 5/8" diam  
turq



EE11 7/8" diam  
NE11 1 5/8" diam  
blk



EE11 7/8" diam  
NE11 1 5/8" diam  
rust



# Feather Cuff

Polished or Heated



# Sterling Silver Earrings

Display package available



# Pins

Approx. size 1.5" x 2" (varies with design) \*H=Heart \*S=Swirl \*ST=Star \*A=Arrow





# Ornaments

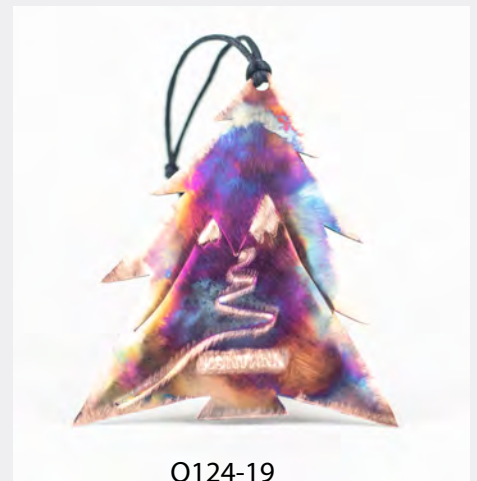
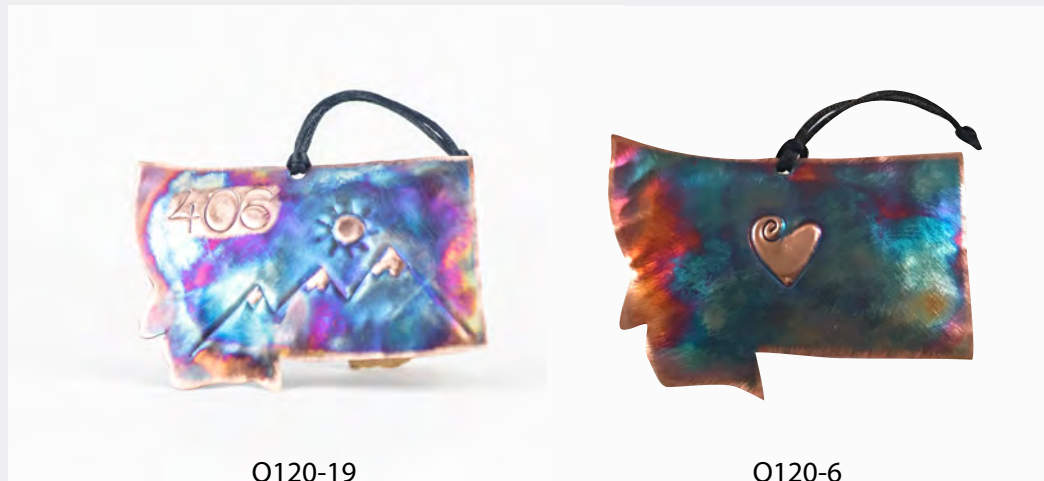
Approx. size 3.5" x 4" (please see image list for additional designs not pictured)  
All styles available with name drop up to 9 characters.

All styles available as a magnet!

## Montana Styles



## Explore Styles



O120-19

O120-6

O124-19

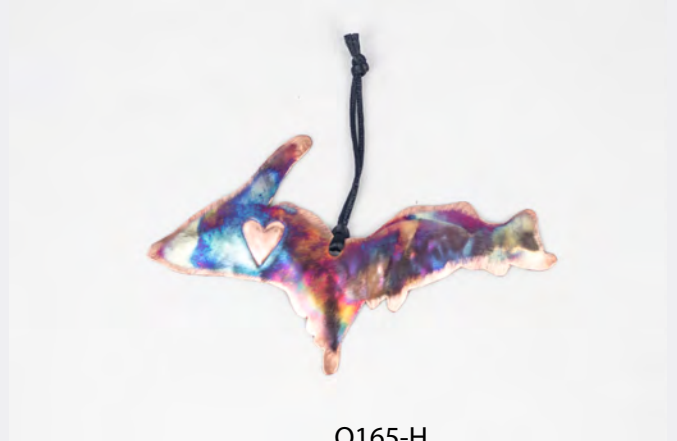
# Ornaments

Alaska Styles \*See image list for more styles



O153-907

O153-H



O165-H



All 50 states available



# Ornaments

\*H=Heart \*S=Swirl \*ST=Star \*A=Arrow \*M=Mountain



# Ornaments

\*H=Heart

\*S=Swirl

\*ST=Star

\*A=Arrow





# Display Stand

## FREE

with minimum purchase

Easy • Convenient • Profitable

# Jewelry Dishes

3" diameter-Decorative Only.



D1



D2



D3



D4



D5

